

# sanilock™



Sanilock Catalog



## Toilet Partitions

Beautiful Design

Durability

Strength

## SANILOCK™ OFFERS:

### Mounting Styles

- 4200 Standard (Floor Mounted)
- 4300 Standard Overhead Brace
- 5200 Standard Plus
- 5300 Standard Plus Overhead Brace

### Finishes

- 30 Stainless Steel
- 70 Antigraffiti

### Parts

- 1 Lateral Panel
- 2 Wall Pilaster
- 3 Central Pilaster
- 4 Terminal Pilaster
- 5 Door
- 6 Urinal Panel
- 7 Short Pilaster
- 8 Alcove Panel

## MATERIALS



30 Stainless Steel



70 Antigraffiti

## ANTIGRAFFITI COLORS

Due to variance among color monitors, the colors that appear on your screen may not be exact.



5751 - 6 White White



751 - 7 Old White



5752 - 3 Light Grey



## SANILOCK™'s HARDWARE

SANILOCK™'s hardware are design to last, Manufacture with 304 stainless steel with thick gauges brings on SANILOCK™'s toilet partition the strength needed for a solid, firm, durable and strong assembly. All the hardware comes in a design kit to make a practical and ease installation.

**Slide Latch**



**Pull Tab**



**Coat Hook**



**Bumper Out Swing**



**Torx Security Round Head Screws**



**Handicaped Coat Hook**



**Adjustment Brackets**



**"U" Bracket**



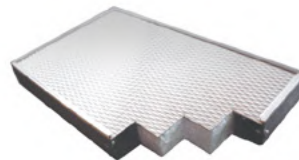
**Urinal Bracket**



**Bush**



**Construction Details**



**Top Hinge**



**Sanilock's Pilaster Cover**



**Fixing Details**



**Lower Hinge**



SANILOCK™'s installation fixing system brings, strength, easy leveling and adjustment to the installation that gives security and firmness in the operation, the shoes are deeply cleaned and protected with SANIBLOCK Technology which is a hydrophobic nanotechnology with a non-stick coating that repels moisture, preventing the residues of mineral salts and cleaners used in mopping and sweeping of the floors from adhering. The shoes will remain looking good for years.

**MOUNTING STYLES**



**4200  
STANDARD  
(FLOOR MOUNTED)**

Model with a floor mounted pilasters that are ideal for restrooms with concrete floors, which allows a great architectural design, easy installation, and clean spaces. SANILOCK™'s anchor design gives a strong and solid assembly on any installation sites.

**4300  
STANDARD  
OVERHEAD BRACE**

Floor mounted pilasters with overhead brace, to bring extra support and firmness, this model is recommended to install on public restrooms such as schools, airports, maquila industry, stadiums or any public space with high traffic areas.

**5200  
STANDARD PLUS**

Model with a floor mounted pilasters and 66 ½ height panels and doors, that gives an extra privacy.

SANILOCK™'s anchor design gives a strong and solid assembly on any installation sites.

**5300  
STANDARD PLUS  
OVERHEAD BRACE**

Model with a floor mounted pilasters with overhead brace and 66 ½ height panels and doors, that gives an extra privacy.

SANILOCK™'s anchor design gives a strong and solid assembly on any installation sites.





**ALCOVE**

ALCOVE Design that allows bathroom spaces to comply de ADA Compliance Act, to give comfort to persons with a physical disability, SANILOCK™'s toilet partitions have the strength and firmness that theses area requires.



**30 STAINLESS STEEL**

Stainless steel type 304 #3 finish, covered with a PVC film that protects the manufacture, shipment and installation, stainless steel finish is a high end and very resistant to corrosion, and ease to clean.

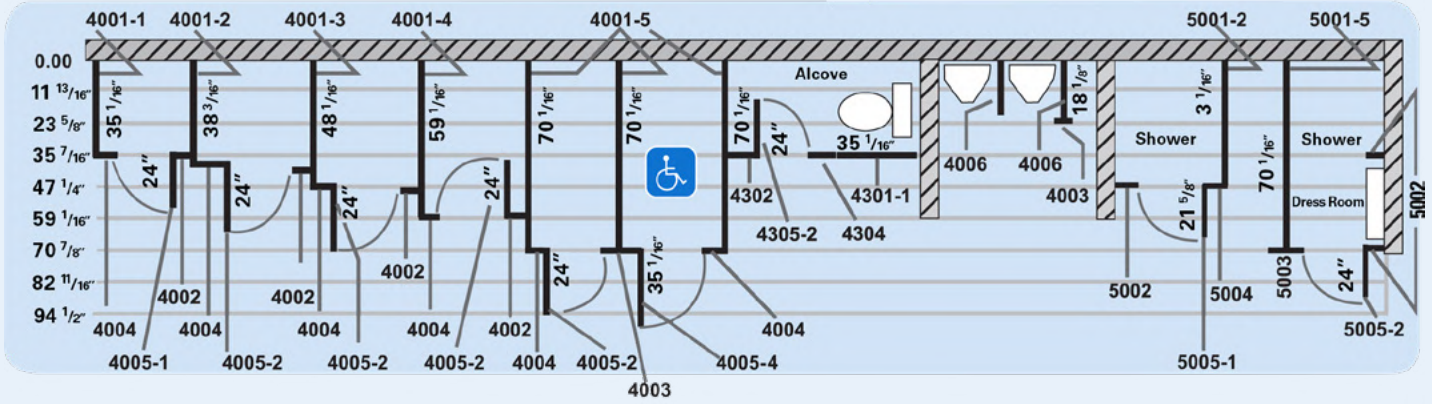


**70 ANTIGRAFFITI**

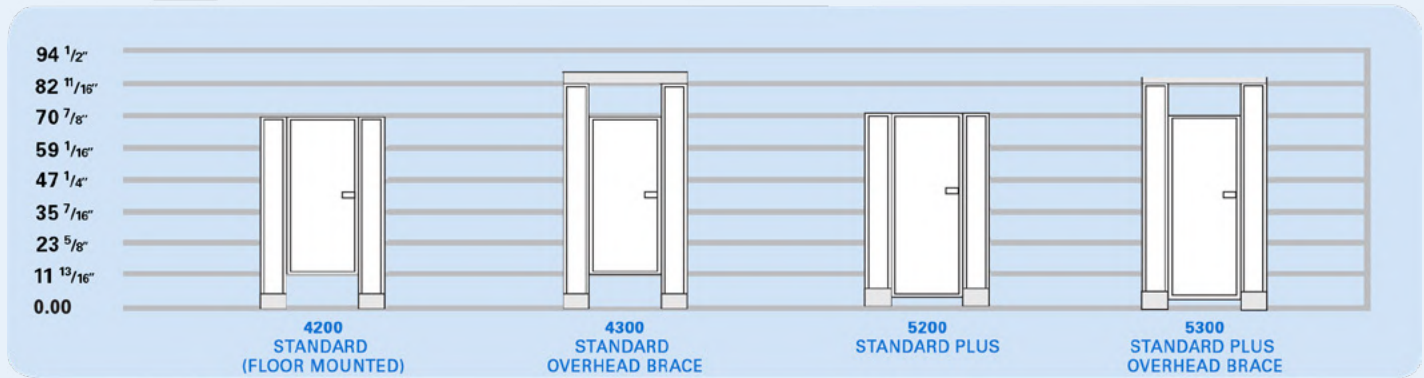
High quality anti-graffiti and antibacterial enamel with a hard ceramic layer that is very resistant protection to chemicals, permanent ink markers, spray paints and scratches, easy to clean and low maintenance.

**SANILOCK™'s toilet partition has been lab tested CLASS "A" on ASTM E84-21 or Standard Test Method for Surface Burning Characteristics of Building Materials.**

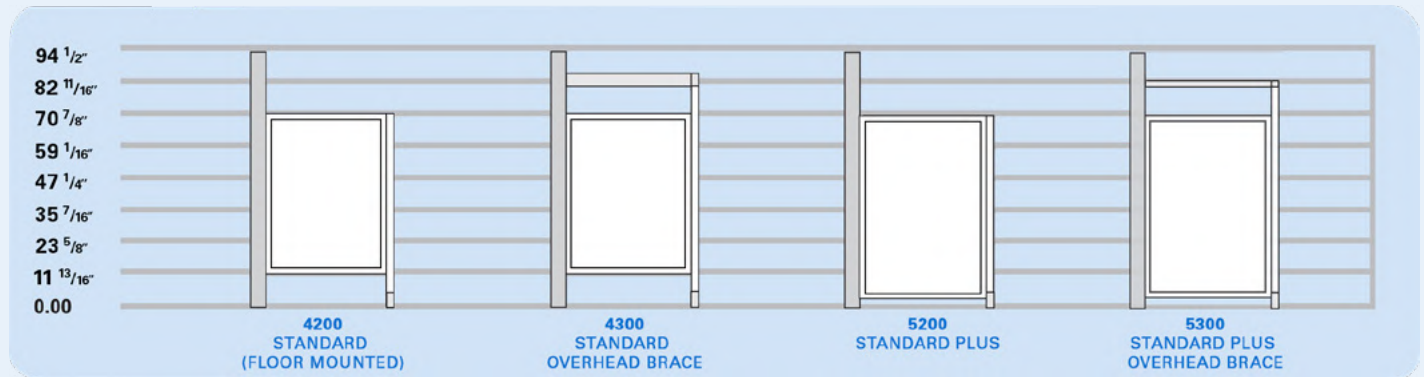
PLANT



FRONT ELEVATION



SIDE ELEVATION



## OUR TEAM



**SANILOCK™, Company founded on 1987 in Monterrey, Mexico.** Created to bring an efficient solution on toilet partitions with new designs, new finishes and top end technology to give the strength and comfort that public restrooms need. **Through our 35 years SANILOCK™ has been awarded as a Great Place to work, Best Mexican companies, and also as a Socially Responsible Company.**

SANILOCK™ toilets partitions have been distinguish for its superior quality and resistant materials, our hardware is manufacture in stainless steel with thick gauges that makes the installation very solid and firm on any high traffic restroom area.

**Our team is form by 100+ team members with clear objectives to bring the solution needed on toilet partitions for public restrooms,** we have received numerous certifications and approvals of many architectural and designer's company's present in the most important venues around Mexico.



# sanilock™



Sanilock.com



Antigrafitipartitions.com



partitions@sanilock.com

(011 + 52) 81 - 8228 - 8300



youtube.com/sanilock



sanilock



sanilock



sanilock



flickr.com/sanilock



sanilock

S04-CAT. SANILOCK-v03

www.antigrafitipartitions.com  
www.sanilock.com | partitions@sanilock.com

WhatsApp (011 + 52) 81 - 2108 - 7865  
(011 + 52) 81 - 8228 - 8300

Call us!